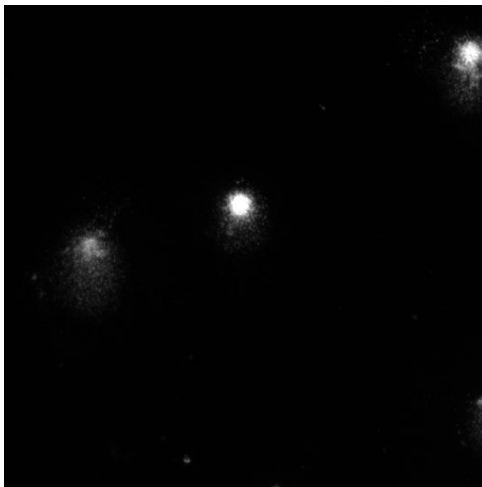


Comet Assay Extension

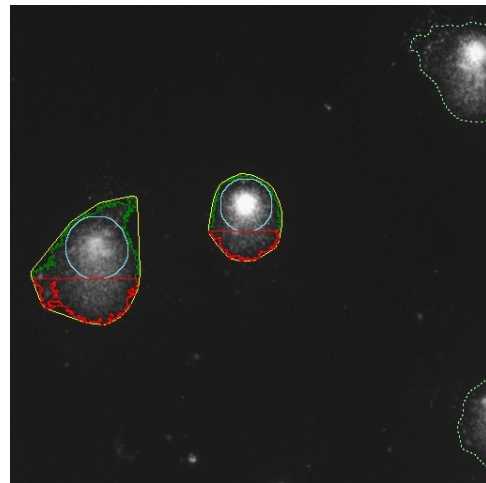
FULLY AUTOMATIC COMET ANALYSIS
WITH OPTIONAL USER VALIDATION
AND SUPPORT OF VIRTUAL SLIDES

The Comet Assay Extension in the Aphelion™ Imaging Software Suite provides support for the Single Cell Gel Electrophoresis (SCGE) comet assay. This simple test is used in oncology to predict the intrinsic radio-sensitivity of tumors, or for the study of individual sensitivity to genotoxic agents. It is also used in genetic toxicology to

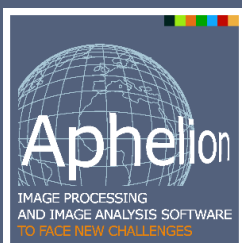


quantize DNA damage in high-risk populations (for example farmers, smokers, or workers in a controlled environment). The comet assay quantifies the ratio of simple and double DNA breaks within individual cells. It is based on the capability of DNA fragments with a negative load to migrate through an agarose gel when an electric field is applied. One of the main benefits of this assay is that it is inexpensive, as only 1,000 to 10,000 cells are enough to unveil a DNA break for 10^{10} daltons. The assay can reveal 100 breaks per cell on average. To prepare images for further image processing, cells are placed on a microscope plate before electrophoresis. After rinsing the plates, DNA is marked with a fluorescent dye (e.g.

ethidium, bromure, and acridine). The plate is then placed under a fluorescent microscope for analysis. In damaged cells, broken DNA spreads towards the anode part of the electrophoresis device, displaying a comet-like shape with an intense head and a diffused tail. The length and intensity of the comet tail vary by function of the broken DNA. Healthy and intact nuclei retain the shape of a disk. Using the software, images can be automatically segmented, and normal, damaged, and highly damaged cells (HDC) are detected and then analyzed.



Comet Assay is an extension for Aphelion™ Dev that performs image processing and image analysis on digital images captured with the optical microscope and stored on a computer. Comet Assay extension is an automatic tool to segment and analyze cells. It includes a fully automatic, powerful, and innovative segmentation process that is independent of illumination, an editing tool to manually annotate the segmentation result if desired, and an automatic analysis module to extract shape and density measures on a cell by



Main benefits of Comet Assay Extension

- Analysis is independent of the initial electric field
- Elimination of noise in the background and of touching cells
- User-defined calibration and support of non-square pixels of stains
- Cell classification into different classes
- Automatic and reproducible computation of tail moment
- Export to a spreadsheet for further analysis

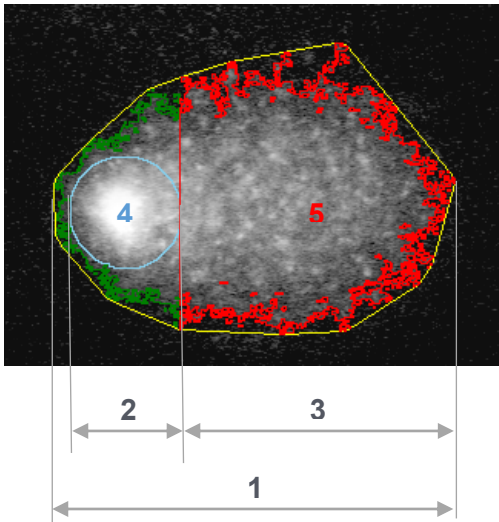
cell basis. This analysis extracts the head and the tail of a cell and analyzes each part independent of the other. These measurements give the biologist a good estimate of the 'spread' of the cell.

Comet Assay Measurement

The Comet Assay Extension provides the following measurements:

Comet	Extent Total intensity Total area
Tail	Extent Extent Moment Olive Moment Integrated intensity Integrated intensity ratio Area Break number DNA ratio
Head	DNA ratio

The figure below provides a graphic explanation of some of the main measurements presented in the table above.



- 1 = Comet extent
- 2 = Head extent
- 3 = Tail extent
- 4 = Head
- 5 = Tail

Image Input

The Comet Assay Extension supports many image formats (e.g., Tiff, Jpeg, Dib and CO1 format) with 8 and 12 bit images.

Data Output

All measurements are saved as Aphelion ObjectSet files. They can also be exported as a Microsoft Excel or CSV file type for further statistical analysis.

System Requirements

Comet Assay Extension requires a valid license for Aphelion™ Dev. It can be installed on any personal computer running Windows™ Vista or higher. Images need to be accessible from a hard drive or from network storage, and organized in folders to be processed by the software. All Comet Assay Extension measurements are calibrated in micrometer units and output in real-world units.

